

# minimal

**üdu it**  
diy kitchen cabinets

## Introduction to the minimal Kitchen Range



Minimal Kitchens will deliver the wow factor.

The clean, uninterrupted lines deliver a timeless look that is always in demand.

The ability to produce this door design, in combination with our high end laminates is really unique, and previously only available from custom kitchen designers and manufacturers.

To achieve the look it requires you, to follow certain rules. We hope the contents of this booklet will assist you in understanding the criteria

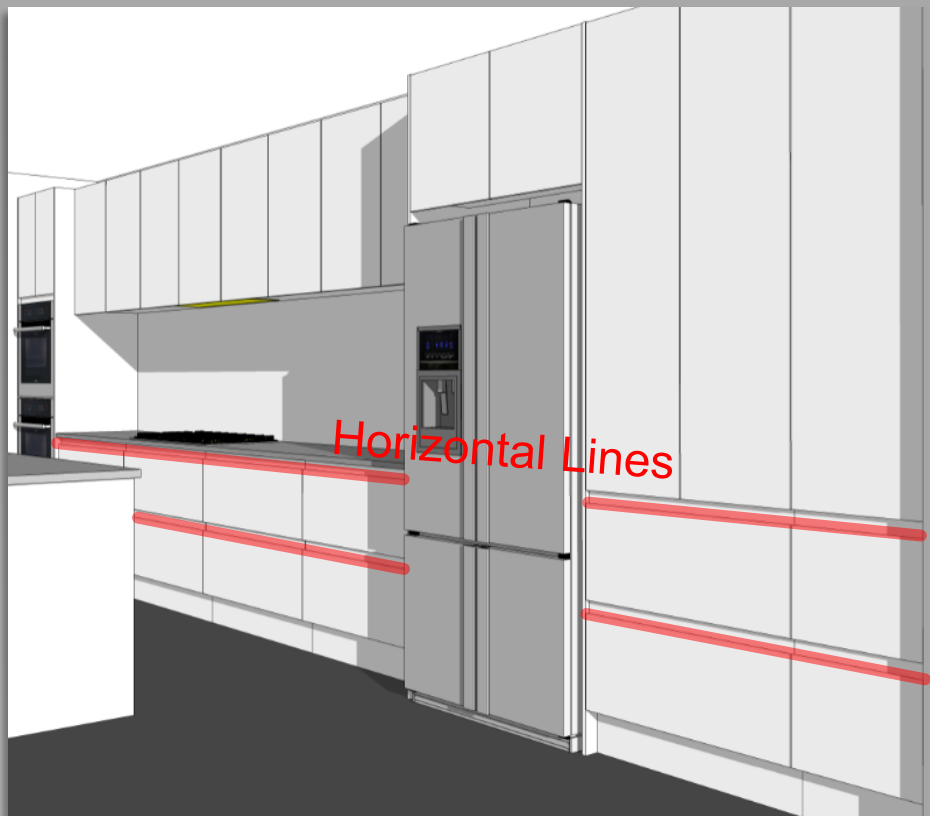


## Designing with minimal is about

- Clean, simple, un-interrupted lines
- Handless cabinets to achieve the minimal style.
- Group cabinet types together – Door cabinets with door cabinets, Drawer cabinets with drawer cabinets – where possible.

## Minimal designing guide.

- Design using cabinets from the minimal range
- Use appliances that work with the minimal style
- For technical reasons the panels are laminated on 18mm board, therefore it is important to design & order only from the Minimal



# minimal

## Colour Range

The minimal cabinet range is available in selected  
Colours & Finishes

ultratouch – smooth, matt anti-fingerprint finish



ultragloss – doors & panels of unparalleled gloss



The ultra range of colours are made from laminate imported from Austria which is then laminated on to NZ moisture resistant mdf board. All bonded with the worlds best moisture and heat resistant PUR glue.



## What you get

Doors	✓ Soft close hinges on all doors
Drawers	✓ Alto Integrated Soft Close drawers ✓ Tall drawers have Alto Drawer Side Infill panel as standard (see below)
Bin Drawers	✓ Full height Alto style Soft Close bin cabinet, with 2 x 26 litre bins
Wall Cabinets	✓ Doors overhang 38mm and include the 45deg edge
Materials	✓ World leading Austrian laminate.. ✓ ..on NZ made 18mm moisture resistant mdf ✓ Water & heat resistant PUR bonding
Cabinet flexibility	✓ Most cabinets can be adjusted in width.



## What appliances go with the minimal range

You will need to choose your appliances carefully to fit the minimal design concept otherwise the design 'look' is disrupted.

### Appliances that are suitable for the minimal range

- Free-standing dishwasher
- Double Dishdrawer
- Wall Ovens, or Under Bench Ovens
- Free Standing stoves

### Appliances not suitable with the minimal cabinet range

- Single dishdrawer
- Integrated appliances (Fridges, Rangehoods, dishwashers or dishdrawers)

Check with UDUIT before ordering your appliance.

### Oven appliances

It's very important to check carefully the manufacturers specs before ordering the Oven Towers – especially the overall dimensions and extra venting allowances

If in doubt you can contact us to check [sales@uduit.co.nz](mailto:sales@uduit.co.nz)



# minimal

These kitchens illustrate the style signature the minimal cabinet range can achieve.



- ❑ Simple uncluttered styling.
- ❑ A clean, slimline kitchen without the hang up of handles.
- ❑ Superior finish of the ultra colours range



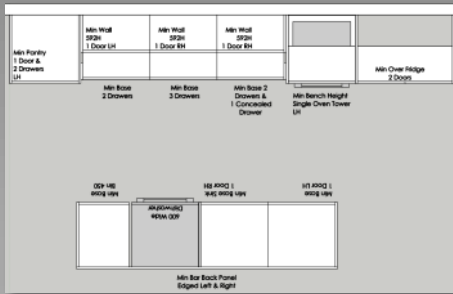
## Design Concepts at a glance



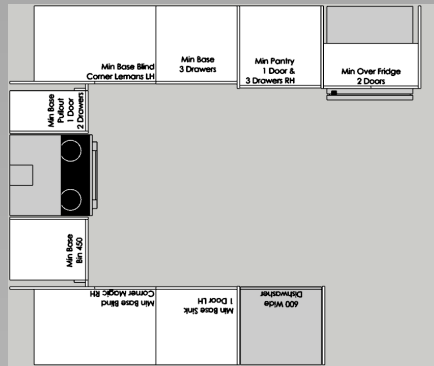
Open plan kitchen layout with Scullery



### Galley style



### U shaped



### L shaped





# minimal

## Cabinet Range

### Base Cabinet

**Options**

- Left & Right 1 Door
- Sink cabinets



Base 1 door



Base 2 Doors

### Base Drawers



2 Drawer



2 Drawer  
concealed drawer



3 Drawer



Pullout 1 door



Base Bins

### Base Corner

**Options**

- Left & Right
- Lemans
- Magic



Base Blind Corner

Refer to cabinet specification sheet for cabinet details for design purpose

### Pantry

**Options**

- Left & Right
- 2 or 4 Doors



2 Stacked Doors



4 Stacked Doors

### Pantry Drawers

**Options**

- Left & Right 1 Door
- 2 Door (over 600mm wide)
- 2 Drawer with 1 concealed drawer (3 drawers total)



Door 2 drawer  
2 Doors/2drawers



Door 2 drawer concealed drawer  
2 Doors/2drawers concealed drawer



1 Door 3 drawer  
2 Doors/3drawers





# minimal

## Cabinet Range

### Pantry Corner

#### Options

-Left & Right



Check detailed specs of cabinets for design purpose

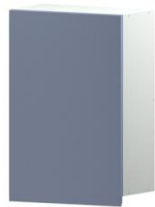
### Wall

(Overhanging Doors)

#### Options

-Left & Right 1 Door

-Height & depth adjustment



1 Door



2 Door



Overridge 2 door



Wall Microwave

### Ovens

#### Options

-Left & Right

Refer to your oven specs for details on oven size

Enter the oven face / front size.

If you are unsure please email us the oven make and model



Base Oven Cabinet



Bench Height Oven Tower



Single Oven & Microwave Tower



1 1/2 Oven & Microwave Tower



2 Single Ovens Tower



Double Ovens Tower

When quoting or ordering, only use cabinets from the minimal range. Do not use cabinets or panels from the standard ranges as these do not line up with the minimal cabinets.

For more information on this please email [sales@uduit.co.nz](mailto:sales@uduit.co.nz)

